

Regeneration in Camberwell

Camberwell Community Council –
Wednesday 20th April 2011



Principal regeneration activity – Council projects

Improving the shopping and trading environment:

- New library
- Transport improvements – town centre
- Night-time economy
- Markets
- Shopfronts

Improving the wider area:

- Thamesreach Academy
- Transport improvements
- Leisure centre
- Elmington regeneration
- East Dulwich estate

New Library

The consultation **started on 14th March**

- **2000 questionnaires have been distributed through the library and at local events**
- **sessions have been held at the library with users**
- **a link to an on line survey has been sent to all contacts and posted on the Council's website**

We have been asking people

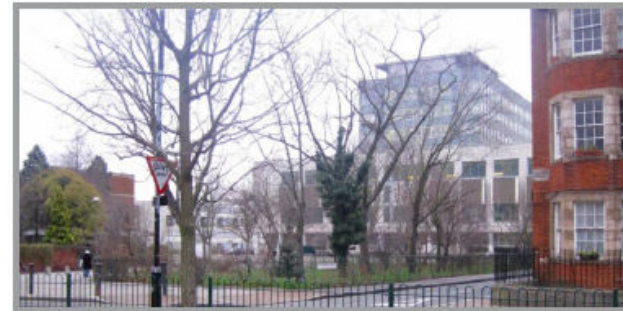
- How they use the library
- What else they would like to see in the library
- What is important to them in planning a new library

New Library

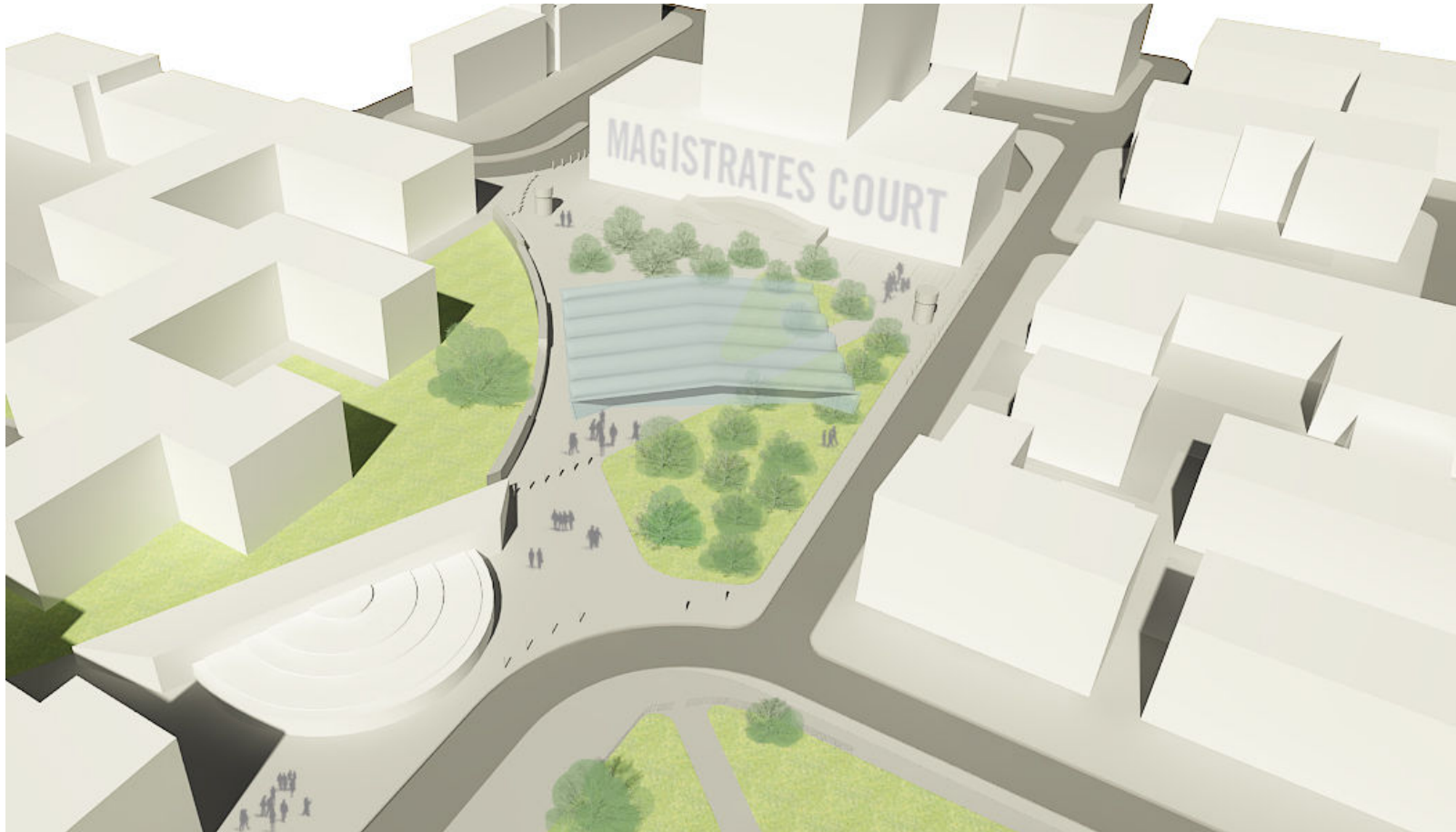
We have also asked for comments on a possible proposal for a new facility

The proposal would be to build a new facility on the square in front of the Magistrate's Court

This could include potentially reusing a building currently housing the One Stop Shop in Bermondsey



New Library – illustrative sketch



New Library – next steps

- *if there is support for the proposal a detailed design for the new building will be progressed*
- *there will be further consultation including an exhibition of the detailed proposals where there will be an opportunity to comment further on the plans*

*PLEASE FILL IN THE QUESTIONNAIRE IF YOU
HAVE NOT ALREADY DONE SO*

Transport improvements - broader

Range of transport schemes currently under way:

-Denmark Hill station, improvements around and within the station including the installation of lifts.

-Southampton Way. Improved road safety and surfacing. Coordinated with shopfront improvements

Transport improvements – town centre

£100k secured to delivered small scale improvements, such as removing unnecessary signs, bins or railings, providing cycle parking or ramps.

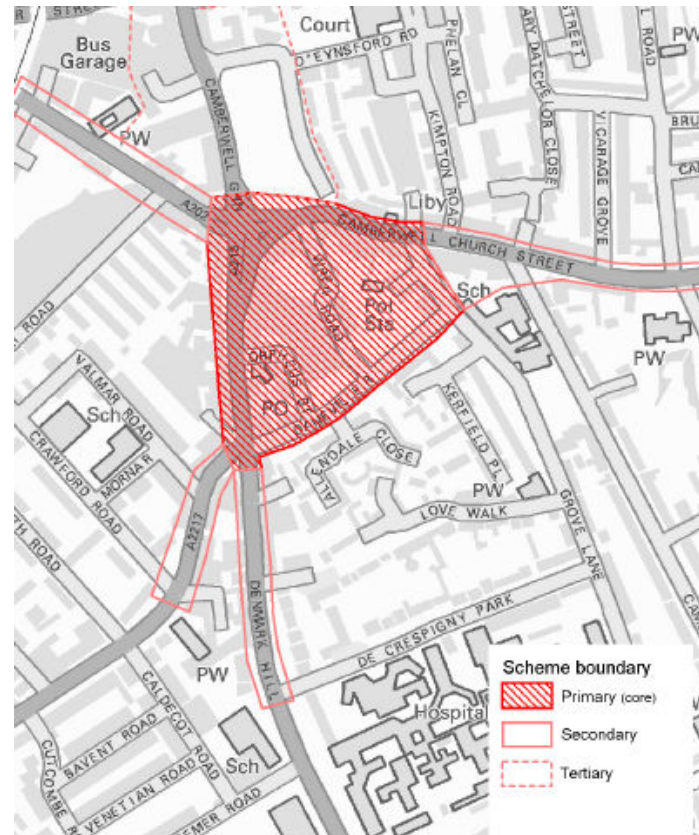
If you have any issues you would like considered please contact Sally.crew@southwark.gov.uk.

A programme to be discussed at community council in July.

Transport improvements – town centre

£200k secured from TfL for feasibility studies and option development in 2011/12 for the wider town centre improvements.

The scheme will reduce pedestrian congestion and improve crossing opportunities, reduce street clutter, review bus operation in the town centre including bus stops.



Evening and night-time economy

Purple Flag initiative

Aim is to develop a safe and vibrant evening and night-time economy



- First 'kickstart' meeting held on 23rd March
- Positive response from those businesses attending to principle of Purple Flag
- Camberwell will be starting the process with limited capacity, so a longer term project is likely
- Opportunity to build up business networks alongside development of Purple Flag
- Currently scoping the project

Regeneration approach

Development team

- Virtual team of officers
- Efficient and effective use of existing resources
- Reporting in to Community Council
- Coordinating function
- Ensuring joined-up delivery
- Involvement of Lambeth officers

Cross-border issues and opportunities

Issues identified at December 2010 Community Council meeting

Street cleaning and bin collection

Planning policy

Enforcement

Regeneration

Quality of life

Camberwell at night

Other cross-border opportunities

Street cleaning and bin collection

Identified issue:

Streets which lie on the border could be cleaned on the same day and waste collected on the same day

Progress:

- Opportunities for shared services such as street cleanliness inspections.
- Streets in Lambeth and Southwark are cleaned on a regular basis.
- Shared timings of bin collections is a possibility that will be assessed.

Planning policy

Identified issue:

Possibility of a joint planning statement for Camberwell

Progress:

- Supplementary Planning Document will be developed for Camberwell with cross-border input.
- SPD will include vision for how Camberwell will develop, including what sort of uses we want to prioritise and their locations.

Enforcement

Identified issue:

Joined-up approach required between Safer Neighbourhood Teams

Progress:

- Lambeth and Southwark both have Designated Public Place Orders (DPPO), whereby if you consume alcohol and cause anti-social behaviour (targeting street drinkers) then the alcohol can be seized.
- Idea is to target street drinking on border streets in similar zero tolerance way as drinking on Camberwell Green was targeted a few years ago.

Regeneration

Identified issue:

Named officers leading on regeneration in Camberwell for respective boroughs

Progress:

- Lead officer for Southwark is Karen O'Keeffe
- Lead officer for Lambeth is Steph Butcher
- Lambeth and Southwark officers have met to discuss ways in which cross-border working can be coordinated on an ongoing basis. The Camberwell development team will begin to include Lambeth as well as Southwark officers to address the key cross-border concerns.

Quality of life

Identified issue:

Consideration of joint policies for mental health services and drugs rehabilitation

Progress:

- Dialogue established with SLAM and other stakeholders
- Beginning to look at ways in which impacts of mental health services and drugs rehabilitation can be planned and managed across services.

Other cross-border opportunities

Further cross-border opportunities:

- Information-sharing events
- Annual forum?
- Public realm and signage

Contact details for lead officers

Transport – Sally.Crew@southwark.gov.uk

Purple flag – Rosanna.Keogh@southwark.gov.uk

New library – Jane.Seymour@southwark.gov.uk

Elmington and East Dulwich – Jennifer.Daothong@southwark.gov.uk

Lambeth – Stephanie Butcher – Sbutcher@lambeth.gov.uk